

Rideau View Golf Club – Dress Code Policy

At Rideau View Golf Club, we take pride in fostering a welcoming, and respectful atmosphere. Our dress code policy reflects the collective values of our membership and aims to balance respect for tradition with modern expectations in both golf and social attire. This policy applies to all members, their families, and guests while on Club property, regardless of age or membership category.

All clothing must be neat, clean, and appropriately fitted. Clothing that are frayed, faded, torn, excessively worn, or otherwise damaged are not permitted. Members may arrive at or depart from the Club in casual attire only when proceeding directly to or from the locker room.

Members are responsible for ensuring that both they and their guests are dressed in accordance with Club regulations. If a dress code violation occurs, it is the responsibility of Club staff—not fellow members to address the issue. Members should report any concerns to the Clubhouse or Pro Shop staff, who will manage the situation discreetly. Individuals who do not adhere to the dress code may be asked to change attire or may be subject to further action.

We thank all members and guests for their cooperation and understanding.

Golf Course & Practice Facilities

Men/Boys

- Hats must be always worn forward and removed inside the Main Dining Room, except when walking to/from locker rooms, in the Pub, or as permitted by specific leagues and events.
- Collared golf shirts, including turtlenecks, mock necks, and blade collars must be tucked in.
- Athletic-style hoodies that are fitted and made from performance materials are permitted on the course. However, large, oversized cotton hoodies or sweatshirts are not allowed, as they do not align with the club's standards for appropriate golf attire.
- Quarter-zips pullovers, vests, and knit sweaters are permitted.
- T-shirts are not permitted on the golf course, clubhouse, or patios.
- Tailored shorts of a reasonable length above the knee are allowed.
- Tailored golf pants, including tight-ankle styles, are permitted.
- Cargo shorts, cargo pants, and denim are not allowed on the course or practice facilities.
- Golf-specific soft spike or spike less shoes are preferred. Athletic trainers and sneakers are acceptable.

Women/Girls

- Hats must be always worn forward and removed inside the Main Dining Room, except when walking to/from locker rooms, in the Pub, or as permitted by specific leagues.

- Collared tops, turtlenecks, mock necks, blade collars with a finished hem may remain untucked.
- Performance material, non-collared shirts with sleeve are permitted. Shirts must be made of moisture-wicking, athletic-style fabric (example: polyester). Cotton T-shirts are not permitted.
- Long sleeve shirts, including UV-protection shirts that provide full arm coverage, are permitted even if they do not have a collar. These shirts are acceptable attire on the course and practice areas.
- Midribs must be covered at all times on Club property.
- Athletic-style hoodies that are fitted and made from performance materials are permitted on the course. However, large, oversized cotton hoodies or sweatshirts are not allowed, as they do not align with the club's standards for appropriate golf attire.
- Quarter-zip pullovers, vests, and knit sweaters are permitted.
- Crew neck sweaters are permitted, provided they are worn over a collared shirt.
- T-shirts and tank tops are not permitted on the golf course, clubhouse, or patios.
- Shorts and skirts must be of respectful length, with built-in shorts fully covered. While "respectful length" may be vague, members are expected to interpret this in the spirit of appropriate private club standards.
- Tailored golf pants, including tight-ankle styles, are permitted.
- Leggings and yoga pants are not permitted, unless worn under a skirt, skort, or other approved bottoms.
- Denim is not allowed on the golf course or practice areas.
- Golf-specific soft spike or spikeless shoes are preferred. Athletic trainers and sneakers are acceptable.

Clubhouse & Patios

Attire permitted on the golf course is also allowed in the clubhouse and on patios, with the following additional guidelines:

- Collared shirts with a finished hem may be worn untucked.
- Smart casual, clean (no rips) denim is permitted; however, jean shorts are not.
- Dress sandals and leather open-toed sandals (e.g., Birkenstocks) are allowed.
- Casual footwear such as flip-flops and sandals are permitted.
- Sundresses are permitted, provided they are of an appropriate length and style for a private club (e.g., modest neckline and hemline, no beachwear).

Enforcement

- **First Infraction:** The member or guest will be informed of the violation by Club staff and receive a follow-up email outlining the infraction. The General Manager and Member Services will be copied.

- **Second Infraction:** The member will be required to attend an in-person meeting.
 - **Subsequent Infractions:** May result in a one-week suspension from the Club.
 - **Guest Infractions:** Treated the same as member infractions, with responsibility falling on the member who brought the guest.
-

League & Event Exceptions

A dress code change may be allowed strictly during designated times, but only with prior approval from the league or event coordinator. This change must also be approved by the General Manager and must maintain a respectful and appropriate appearance.

Note: Our staff are authorized to address dress code concerns and may deny access to the first tee or practice areas if attire does not comply. Please respect their role in upholding Club standards. Any concerns should be directed to the General Manager or department heads for private discussion.

The Board trusts members to uphold the spirit and standards of this policy. If you have any questions, please contact a member of our management team.

Respectfully,
The RVGC Board of Directors



RIDEAU VIEW
GOLF CLUB | OTTAWA

Women's Dress Code



Shorts and skirts must be a respectful length, with built-in shorts fully covered.



Crew neck sweaters are permitted, provided they are worn over a collared shirt.



Long sleeve shirts, including UV-protection shirts are permitted even if they do not have a collar.



Tailored golf pants, including tight-ankle styles, are permitted.



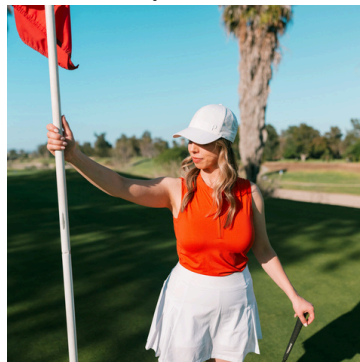
Athletic-style hoodies that are fitted and made from performance materials are permitted.



Golf-specific soft spike or spike less shoes are preferred.



Golf dresses must be a respectful length, with built-in shorts fully covered.



Hats must be always worn forward and removed inside the Main Dining Room.



Quarter zips, vest, and knit sweaters are permitted.



RIDEAU VIEW
GOLF CLUB | OTTAWA

Men's Dress Code



Golf shirts must be tucked in.



Quarter zips, vest, and knit sweaters are permitted.



Tailored shorts of a reasonable length above the knee are permitted.



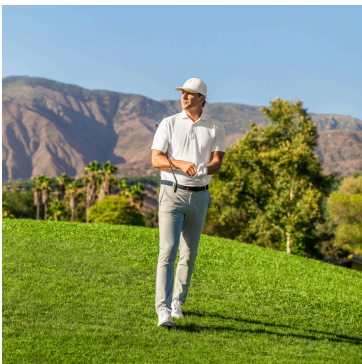
Athletic-style hoodies that are fitted and made from performance materials are permitted.



Golf specific soft spike or spike less shoes are preferred.



Hats must be always worn forward and removed inside the Main Dining Room.



Tailored golf pants, including tight ankle styles are permitted.

We thank all members and guests for
their cooperation and understanding of
our Dress Code Policy.

-The RVGC Board of Directors